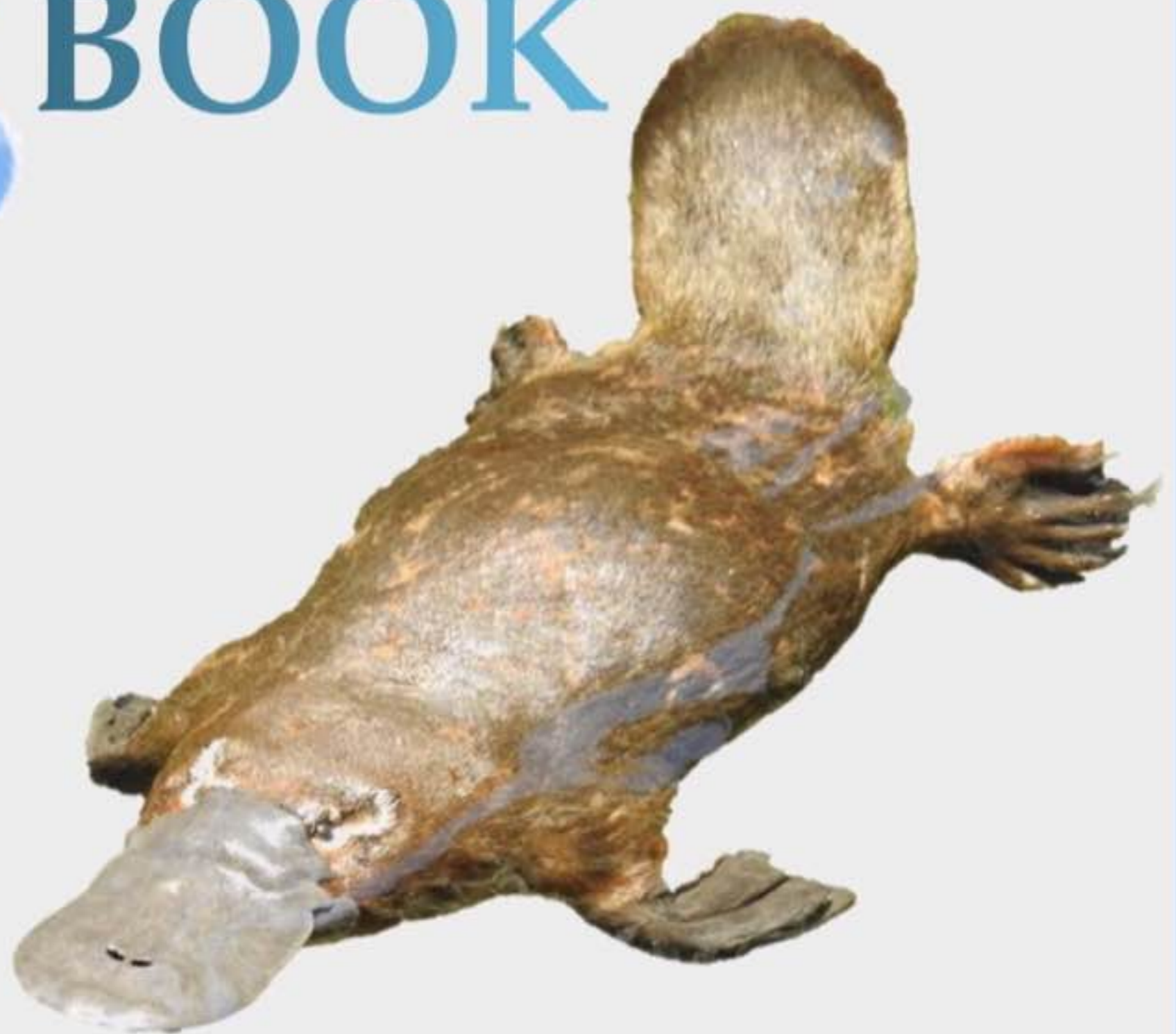


PLATYPUS

PUZZLE &

ACTIVITY

BOOK



# Platypus puzzle

U	V	E	N	O	M	O	U	S	Y	B	I	L	L
S	W	E	B	B	E	D	F	E	E	T	S	N	S
U	E	W	O	R	R	U	B	E	T	G	G	S	S
B	O	O	V	F	Y	H	S	W	G	A	E	N	F
S	L	C	U	L	E	B	T	E	S	P	E	R	F
T	K	R	I	F	F	L	E	S	L	S	E	S	O
R	C	L	F	L	R	R	S	A	T	S	P	P	R
A	R	S	I	S	S	T	T	I	H	G	T	O	A
T	E	L	A	M	C	Y	N	W	S	F	R	T	G
E	E	N	T	E	P	G	A	R	P	O	S	T	I
A	K	G	S	U	O	T	S	P	U	T	E	I	N
L	S	N	S	Y	E	S	S	E	R	F	T	N	G
T	I	L	F	R	P	O	O	L	S	T	O	G	S
B	T	S	G	E	U	G	E	B	T	P	R	U	N

PLATYPUS

INSECTS

RIFFLES

BURROW

POOLS

CREEKS

NESTING

FRESHWATER

SUBSTRATE

EGGS

MILK

SPUR

VENOMOUS

BILL

WEBBED FEET

FORAGING

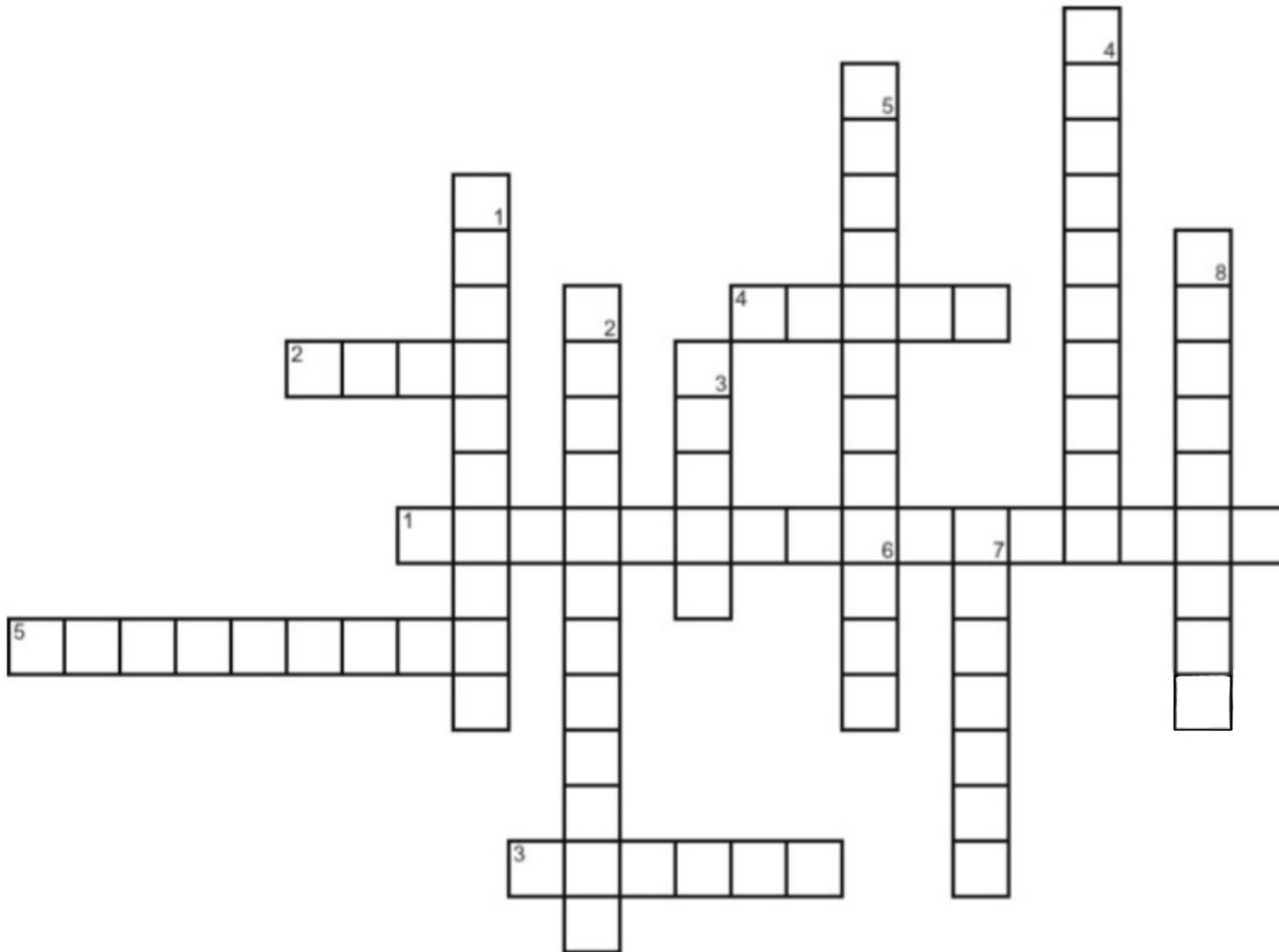
FUR

SPOTTING

SHY



# Platypus crossword puzzle

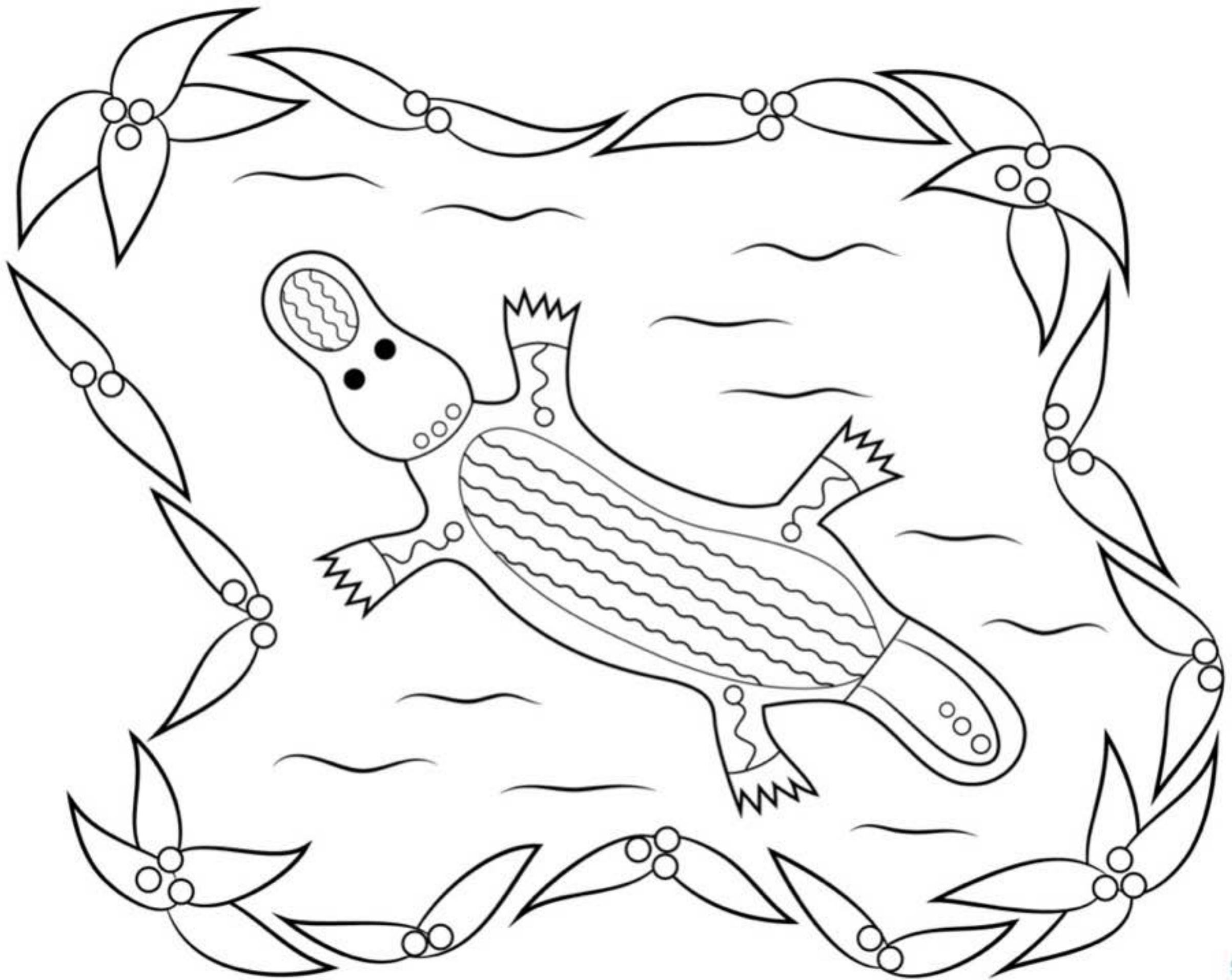


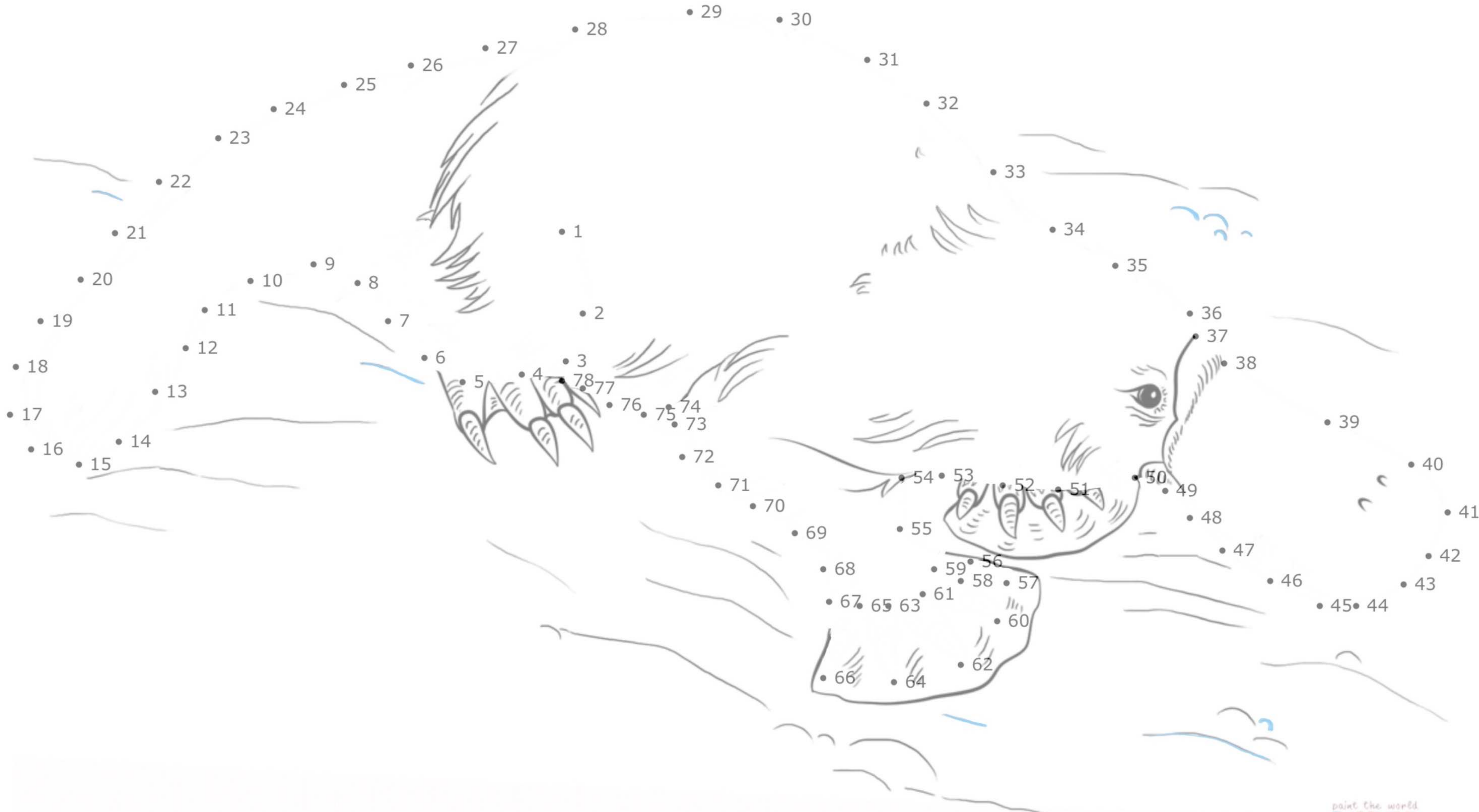
## Across

1. Bill sensory
2. Females produce
3. An impostor animal
4. Swim in
5. Forage through

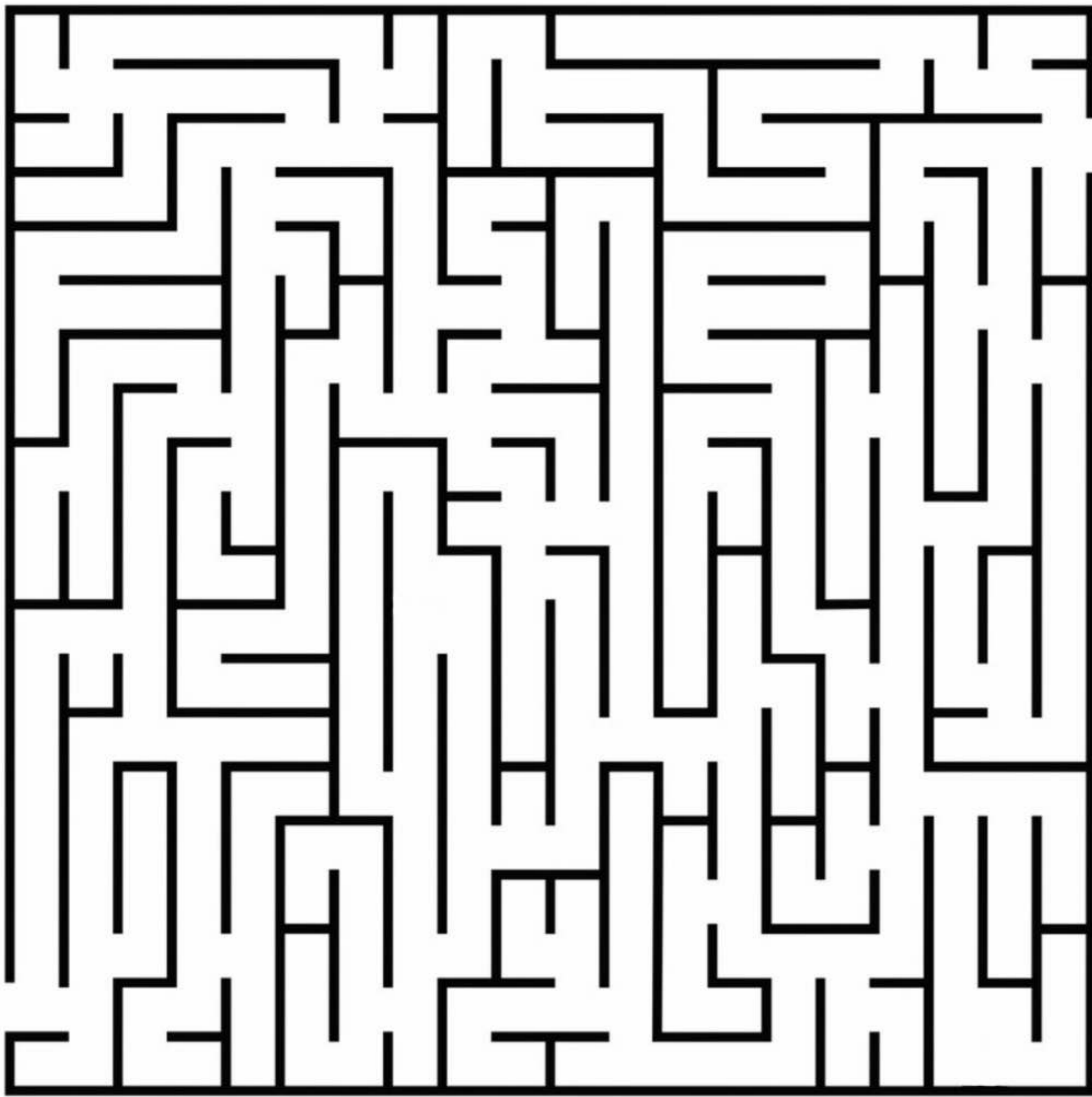
## Down

1. Popular description of platypus
2. Food items
3. Males have
4. Swim using
5. Active
6. Females lay
7. Other monotreme
8. Distribution





# Help the platypus forage for its food



# HAPPY PLATYPUS

How you can help an iconic Australian.

## 1 REDUCE WATER CONSUMPTION

Limit showers and watering garden times. Platypus rely upon permanent water to feed and mate.

## 2 CLEAN UP RUBBISH

In and around waterways to keep the water clean and clear.

## 3 CUT CIRCULAR RUBBISH

Cut rubber bands, hair ties and other rings that can entangle platypus and other wildlife.

## 4 REHABILITATE BANKS

Replant native vegetation along the banks. This will help stabilise the banks for platypus burrows.

## 5 LEAVE LOGS

Leave logs and branches in the waterways. It creates habitat for the food items platypus eat.

## 6 EXCLUDE LIVESTOCK

Fence off livestock from the waterway. This will help minimise bank erosion where platypus burrow.

## 7 WEED REMOVAL

Along banks (in conjunction with rehabilitation) and instream. Clean out aquatic weeds such as Elodea and Salvinia.

## 8 FISH RESPONSIBLY

Properly discard unwanted fishing line. Look out for platypus, they can become hooked.

## 9 USE WILDLIFE FRIENDLY YABBY NETS

Use wildlife friendly alternative nets such as Open Top Nets instead of enclosed yabby traps (Opera House Nets) which drown aquatic air-breathing mammals.

## 10 RESPONSIBLE PET OWNERSHIP

Control dogs around waterways especially at dawn and dusk.





## Fun facts

1. Platypus have thick and waterproof fur with a hair fibre density of 600 – 900 hairs per square millimetre. This is like wearing a 3 mm thick neoprene wet suit. Great insulation in cold water!
2. The platypus has a body temperature of 32° Celsius which is a lot lower than a human's body temperature of 37° Celsius.
3. Female platypuses lay eggs which are only 14 mm x 17 mm when laid. A newly hatch baby platypus is only ~1.5 cm long.
4. Some of the oldest platypuses recorded have been 20 to 21 years old. One found in the Shoalhaven River Catchment, NSW and another near Sunbury, Victoria.

### Platypus crossword puzzle answers

Across: 1. Electroreception 2. Milk 3. Rakali 4. Water  
5. Substrate

Down: 1. Duckbill 2. Insect larvae 3. Spurs 4. Webbed feet  
5. Night-time 6. Eggs 7. Echidna 8. East Coast

Keep updated on platypus news,  
search PlatypusWatch Network.